



White Paper:

SmartWindow Settings & Use

November 2009

*Anthony Fonzo
Senior Product Marketing Manager
Philips Hospitality Americas*

Contents

Contents	2
Applicability	2
How does an Installer activate SmartWindow?	2
What video resolutions are supported?..	3
How does a guest use SmartWindow? ...	3
How can I make the computer desktop or TV program side larger or smaller?	4
How do I turn off SmartWindow?.....	5
SmartWindow Cheat Sheet.....	6

Applicability

The features described in this document are applicable only to the 2008 and newer ranges (models ending in 5860, 5460, 5561 and 5581). Note: the menus shown are for the 2009 range of products and the precise button and menu sequences detailed may not be exactly the same in 2008 models.

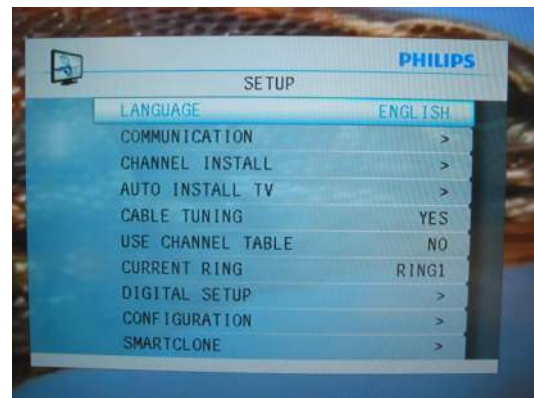
What is SmartWindow?

SmartWindow is a feature which allows the guest to continue to enjoy audio and video on a portion of the TV screen while utilizing the remainder of the TV screen as a computer monitor. Using this feature, a guest can work on the computer, surf the internet, etc., while keeping an eye on the news, their favorite show or ballgame. It is a split window picture in picture, with the left side always being the computer desktop. Once correctly connected and configured, the guest can choose between the TV program's audio, or the computer's audio, while enjoying both video sources in a side-by-side arrangement.

SmartWindow must be activated in the software before it can be enabled and used by a guest.

How does an Installer activate SmartWindow?

Using the setup remote, RC2573GR, with the side slider selector set to "Setup", press "M" to enter the setup menu. You will see a screen that looks like this:



Press the ▲ button twice to navigate to Configuration (2nd from bottom), and then press the ► button to enter that sub-menu. Press the ▼ button 3 times

to navigate to Control, and then press the ► button to enter the Control sub-menu.



Press the ▼ button 5 times to navigate to “Smart Window Menu Item”, and press the ► button to toggle the value to “YES”. Press “M” an appropriate number of times to back your way through and then clear the menu system, or, alternatively, you can let the menu time out after 1 minute. When set to “YES”, this feature is enabled. However, it is only viewable as a menu item from the guest remote when VGA is the current input and has a valid signal.

What video resolutions are supported?

The VGA input for this TV supports 4 computer video resolutions:

- 1) 640x480 *
- 2) 800x600 *
- 3) 1024x768 *
- 4) 1366x768 (full screen only)

SmartWindow only supports 3 of these 4 resolutions, denoted by *. Since SmartWindow does not support 1366x768, a blank desktop side (left) of the TV display will appear if SmartWindow is enabled while this video resolution is present.

How does a guest use SmartWindow?

Using a guest remote, RC2888, follow these steps to use SmartWindow:

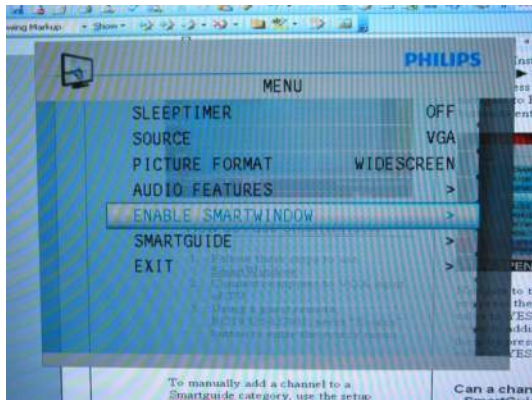
Connect computer to VGA input of TV using VGA (male/male DB15) cable. If computer audio is desired, connect an audio cable (1/8" phono to RCA L/R) from computer to the audio input jacks of the TV's CVI input.

Press “Source” button to enter the source menu.



Press the ▼ button until VGA is highlighted. Then press the ► button to select the VGA input. If computer desktop is not displayed, ensure that computer video is being output. It is advisable to set the video output to one of the four previously listed supported formats at this time. On laptops, it may be necessary to enable video output to the VGA connector; this is usually accomplished by some combined keystrokes such as <FN> + <F8>.

Press “Menu” button, press ▲ button 3 times to highlight “Enable SmartWindow”, and press ► button once.



The screen may go black for a moment while the TV resizes the computer video and adds the TV tuner program on the right side.

To select the computer's audio (audio cable must be connected), begin by pressing the "Menu" button, then press the ▼ button 2 times to navigate to Audio Features.



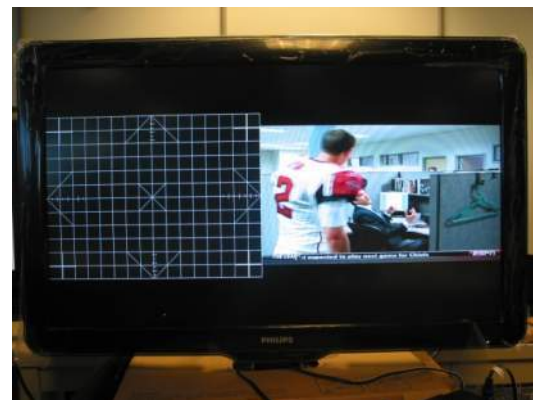
Press the ► button to enter the Audio Features sub-menu, and then press the ▼ button to navigate to Split Audio Source.



Using the ► button toggles the value between "TUNER" and "CVI". Select CVI to play the computer audio, or select TUNER to play the audio for the TV program being displayed in the SmartWindow.

How can I make the computer desktop or TV program side larger or smaller?

When 640x480 video resolution is being received by the TV from the computer, the size of the TV program window (right side) is at its largest, just over one-half the screen width, as shown.



640x480

When 800x600 video is being received by the TV, the size of the computer desktop is slightly larger, and the TV program is smaller, as shown.



800x600

When 1024x768 video is being received by the TV, the size of the computer desktop is at its largest, and the TV video is even smaller, as shown.



1024x768

Changes to the computer's video resolution can be made at any time, and the display will blank for a moment and then appear re-sized.

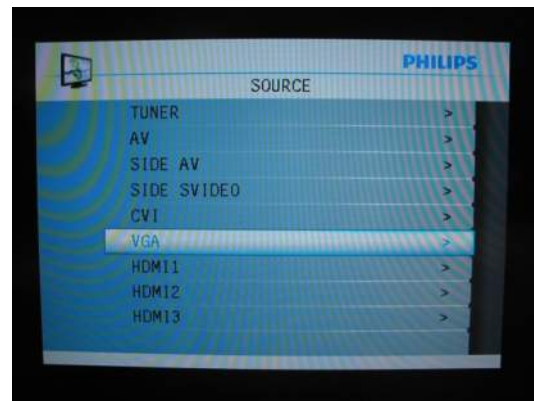
How do I turn off SmartWindow?

To disable SmartWindow, press "Menu", then ▼ button 3 times to navigate to Disable SmartWindow.



Then press the ► button. The TV will display the computer VGA video (desktop).

To return directly to Tuner mode without first displaying the full screen computer desktop, press "Source" to enter that sub-menu. Press the ▼ button 4 times to navigate to Tuner, and then press the ► button. SmartWindow will be disabled and the current input will now be Tuner.



SmartWindow will also be disabled each time the TV is turned off, or if any other Source is selected from the guest menu (i.e. AV, SVIDEO, CVI, HDMI1, HDMI2, or HDMI 3).

SmartWindow

Cheat Sheet

To enable SmartWindow (place feature into guest menu):

Setup → Configuration → Control → Smart Window Menu Item
Set Smart Window Menu Item to YES/NO

To use SmartWindow (as a guest):

Select VGA input: Source → VGA → OK
Connect computer via VGA cable, and audio to CVI L/R if desired.
Set computer to output video to television (640x480 or 800x600 or 1024x768).
Menu → Enable SmartWindow → ►

To select audio:

Menu → Audio Features → Split Audio Source
Set Split Audio Source to CVI (options are TUNER/CVI)

To change size SmartWindow:

Change the computer output resolution.

To turn off SmartWindow:

Source → (select any source other than VGA)
Or
Menu → Disable SmartWindow → ►